

# 3-GIS | Web

## Copper modeling

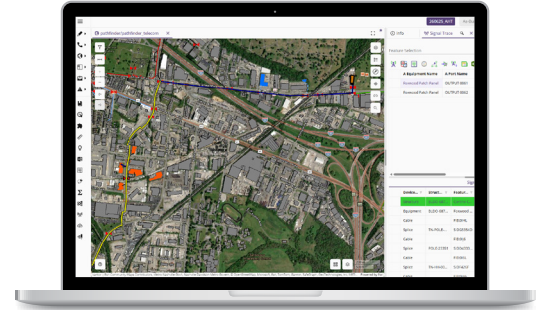
Improve construction  
rideout efficiency

Accurate network  
documentation

Job-at-hand  
simplicity

### Accelerate your speed to revenue with 3-GIS | Web copper modeling

3-GIS | Web gives you the instruments needed to unite your legacy copper infrastructure and fiber networks in a single system. Maintain your inventory and model the connectivity of your complete copper and fiber networks from any terminating device to a main distribution frame (MDF) inside a central office, all within one database.



### What you can do with 3-GIS | Web copper modeling

Get the most out of your network data with tools that allow you to logically model your legacy copper data alongside your fiber in a central repository with easy update and retrieval capabilities. Model ripples and throws, trace signal paths, and see where each asset is located to understand how your network components work together to deliver service to your end users. Troubleshoot outages faster and keep up with the status of your copper assets as you work to replace them with fiber.

### What 3-GIS | Web copper modeling can do for you

Gain a complete view of your network in a single system to eliminate data silos and keep business and engineering teams aligned. Built on a scalable architecture, 3-GIS | Web supports the full range of network documentation needs, helping your organization manage network data efficiently as operations grow.

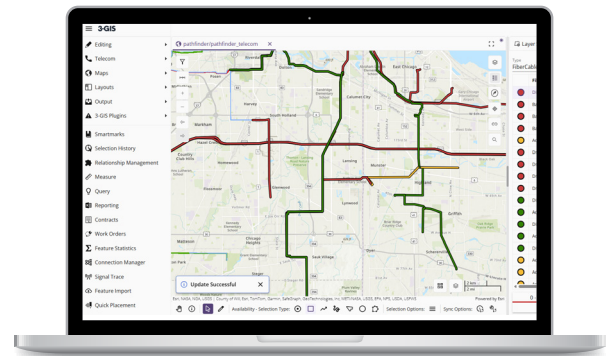
### About 3-GIS | Web copper modeling

Differentiate between cable types at a glance and query by cable type to find exactly what you need. Attribute ripple and throw based on splice connections and termination points, then customize your schema to fit project requirements as they evolve. Mark terminal points and pole locations directly in the system, and sync data with 3-GIS | Mobile so field crews can work offline and stay current.

## Key Features

3-GIS | Web copper modeling helps you take control of your copper infrastructure by making it easy to:

- Visually differentiate between cable types
- Query specific cable types
- Ripple and throw attribution based on splice connections and termination points
- Manage counts through signal management tools



## About Us

3-GIS empowers telecom and utility companies to achieve better operating efficiencies and to meet the challenges of building increasingly complex networks. 3-GIS uses a data driven approach based on geospatial reference, rules-based calculations, mobility, and webbased services to revolutionize the potential and realize the market opportunities of network assets. With products purpose built for telecom and utility operations, we provide the visibility and confidence teams need to make better decisions, reduce costs, and move faster.

Our fully-configurable solutions allow users to plan, design, and manage networks; provide real-time data that is used enterprise-wide; and enable automation for faster service activation, in one seamless system. The company has development, design services, product support, and operational staff in five countries challenging the status quo every day to improve the economic visibility of the networks we depend on; creating a more connected and informed world.



Contact us for a full demo and learn how 3-GIS can benefit your organization.

+1 720.279.9894

[www.3-GIS.com](http://www.3-GIS.com)

[info@3-GIS.com](mailto:info@3-GIS.com)

**3-GIS**