



# EXPRESS SOLUTION WATER



The 3-GIS Express Solution now supports the water market with easy to use and administer web and mobile applications. As seen in the above picture, Network Express allows users to perform a number of water network maintenance and analysis functions such as trace, query and report. The reports can include items such as a listing of valves required to isolate a point on the network and the customers that would be affected by the isolation.

## 3-GIS Express Solution for Water

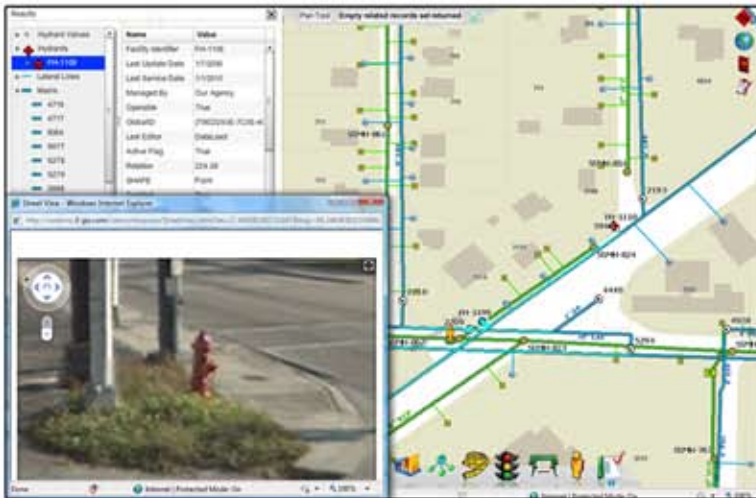
The Network Express and Field Express applications can now better assist in the water and waste-water industries, including the ability to document inspections of lines, hydrants and valves as well as perform network and isolation tracing.

- Meter/Valve Inspections
- Redlining/Notes
- Valve Isolation Trace
- Upstream/Downstream Trace
- Integrated Routing
- Leak Management
- Hydrant Inspections
- Work Order Management
- Reporting
- Data Exports to Analysis Packages
- Integrated Google Street View



### NETWORK EXPRESS

*GIS Editing and Design on the Web*



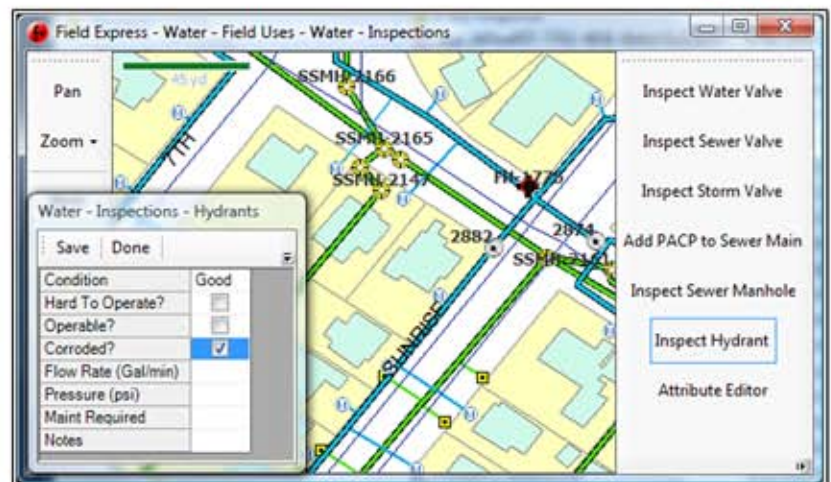
After selection of an area, Network Express displays information for the identified area. The user can choose to find out more information about specific hydrants, mains, valves, etc. In this screen shot, the user has chosen a hydrant and utilized the Google Street view application to see a picture of the hydrant to determine accessibility.

## FIELD EXPRESS CHAMELEON

*Mobile Data Collection and Updates*



Field Express Chameleon allows field technicians to document inspections on water equipment and mains as well as identify the location of leaks and issues.



Contact Us  
[www.3-GIS.com](http://www.3-GIS.com)  
256-560-0744  
[info@3-GIS.com](mailto:info@3-GIS.com)