



EXPRESS SOLUTION



Telecommunications



In today's increasingly competitive environment, telecommunications companies must find ways to adapt to changing technologies while maintaining a consistent process throughout the enterprise. As networks grow and become increasingly complex, the need for precise data that is easy to access and edit is evident. 3-GIS provides telecommunications companies with applications that are easy to implement and extend across the enterprise. With the 3-GIS Express Solution, IT Administrators can manage the system from a single server, Desktop Users have instant access to manage corporate assets and Field Technicians can easily capture and publish data back to the office in real time.

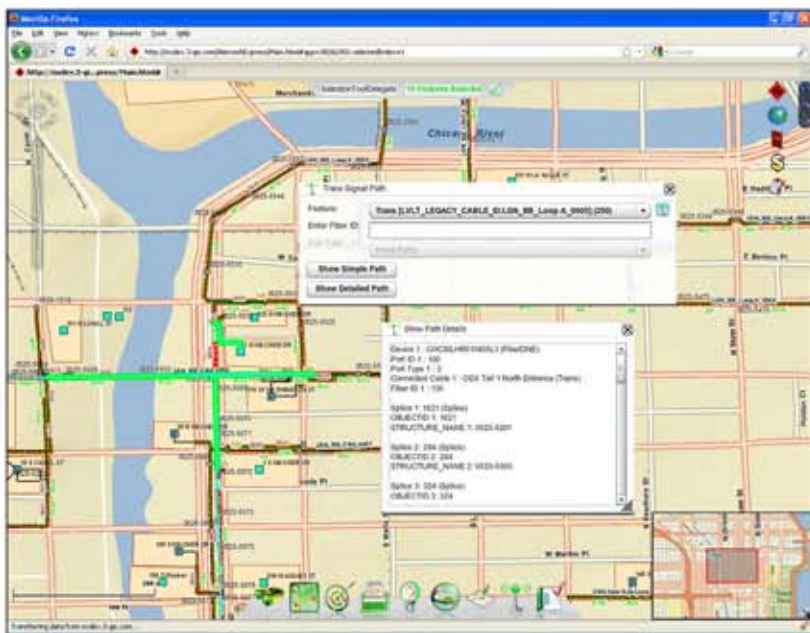
3-GIS Express Solution



NETWORK EXPRESS

GIS Editing and Design on the Web

Developed for the Internet, Network Express provides a modern user interface that is easy to use and adopt. Network Express was designed from the beginning to provide an experience focused on the telecom enterprise to quickly and efficiently manage, publish, and share vital network information.



Network Express for Telecom:

- View and edit GIS data through an easy to use web interface
- True web-based solution without loss of GIS functionality required of user
- Places GIS into the hands of all personnel
- Provides tools to report, trace, query, route, plot, perform detailed connection and splice modeling
- Geoprocessing tools that automate planning, design, engineering and maintenance
- Provides a planner with a quick view of unused assets along a route or within a defined area
- Supports fiber, coax, HFC and virtually any connected network of assets
- Readily displays other published data such as weather, AVL, outage, etc...

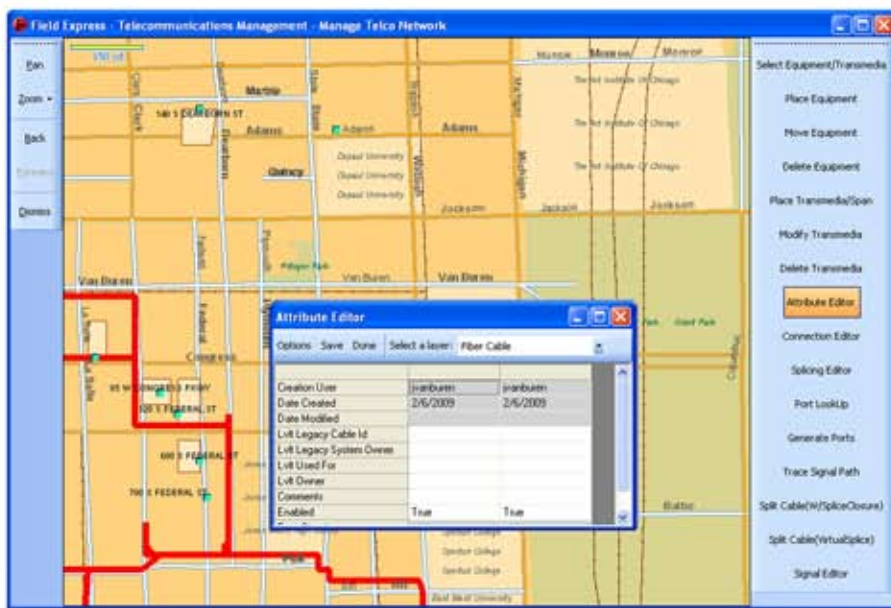
FIELD EXPRESS CHAMELEON

Mobile Data Collection and Updates



Field Express Chameleon Collects & Updates Info For:

- Equipment
- Cables
- Strands
- Route info
- Splices
- Termination points



Contact Us
www.3-GIS.com
 256-560-0744
info@3-GIS.com